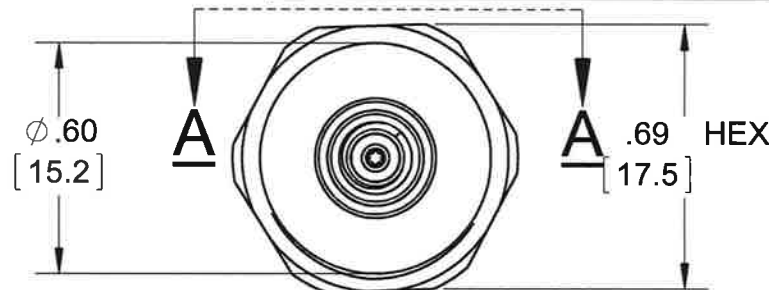
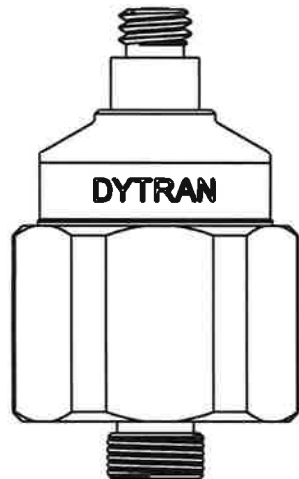


PROPRIETARY AND CONFIDENTIAL

THE INFORMATION CONTAINED IN THIS DRAWING IS THE SOLE PROPERTY OF DYTRAN INSTRUMENTS INC. ANY REPRODUCTION IN PART OR AS A WHOLE WITHOUT THE WRITTEN PERMISSION OF DYTRAN INSTRUMENTS INC. IS PROHIBITED

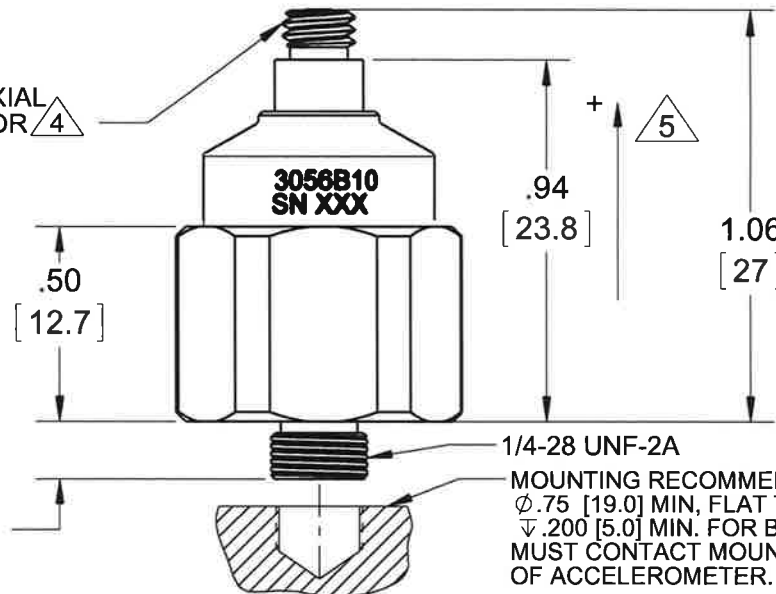
REVISIONS

REV	ECN	DESCRIPTION	BY/DATE	CHK	APPR
A	10000	INITIAL RELEASE	JS 05/11/15	En	Dr



SECTION A-A
ROTATED 180°

10-32 COAXIAL CONNECTOR ⁴



⁵ ARROW INDICATES ACCELERATION DIRECTION FOR POSITIVE OUTPUT.

⁴ MATES WITH DYTRAN CABLE 6010AXX & 6011AXX.

3. WEIGHT: 16 GRAMS, MAX.

2. SENSITIVITY: 10mV/g

1. HOUSING AND CONNECTOR MATERIAL: TITANIUM.

NOTES: UNLESS OTHERWISE SPECIFIED

1/4-28 UNF-2A

MOUNTING RECOMMENDATIONS: PREPARE FLAT MOUNTING SURFACE $\phi .75$ [19.0] MIN, FLAT TO .001TIR. DRILL AND TAP 1/4-28 UNF-2B $\nabla .200$ [5.0] MIN. FOR BEST FREQUENCY RESPONSE, ACCELEROMETER MUST CONTACT MOUNTING SURFACE OVER ENTIRE MOUNTING SURFACE OF ACCELEROMETER.

CONTRACT NO.



TITLE:

**OUTLINE/INSTALLATION
DRAWING 3056B10**

APPROVALS		DATE
ORIG	JS	04/01/15
CHK	En	5/11/15
APP	Dr	5/21/15
APP		

SIZE	CAGE CODE	DWG. NO.	REV
A	2W033	127-3056B10	A
SCALE: NONE		SOLIDWORKS	SHEET 1 OF 1

UNLESS OTHERWISE SPECIFIED:
DIMENSIONS ARE IN INCHES.
DIMENSIONS IN BRACKETS []
ARE IN MILLIMETERS
TOLERANCES ARE:
INCHES METRIC ANGLES
XX $\pm .03$ X ± 0.8 $\pm 1^\circ$
.XXX $\pm .010$ XX ± 0.25

MATERIAL

FINISH

DO NOT SCALE DRAWING

UNLESS OTHERWISE SPECIFIED:
INTERPRET DIM & TOL PER
ASME Y14.5M - 1994.
REMOVE BURRS.
COUNTERSINK INTERNAL THDS
90° TO MAJOR DIA.
CHAM EXT THDS 45° TO MINOR DIA.
THD LENGTHS AND DEPTHS ARE FOR
MIN FULL THDS.
THDS PER MIL-S-7742.
DIMENSIONS APPLY AFTER FINISHING.


ALL MACHINED SURFACES ⁶³
TOTAL RUNOUT WITHIN .005.
BREAK SHARP EDGES .005 TO .010.
MACHINED FILLET RADII .005 TO .015.
WELDING SYMBOLS PER AWS A2.4.
ABBREVIATIONS PER MIL-STD-12.

USED ON NEXT ASSY

APPLICATION

THIRD ANGLE PROJECTION



MODEL NUMBER		PERFORMANCE SPECIFICATION				DOC NO.																					
3056B10						PS3056B10																					
		ACCELEROMETER, IEPE,SINGLE AXIS				REV B, ECN 15075, 05/15/19																					
		<ul style="list-style-type: none">• RUGGED, LIGHTWEIGHT• MECHANICALLY AND ELECTRICALLY FILTERED• INTEGRAL STUD MOUNT• CASE ISOLATED• HERMETICALLY SEALED				<div>This family also includes:</div> <table><tr><th>Model</th><th>Sensitivity (mV/g)</th><th>Range (Gpeak)</th><th>Oper. Temp(°F)</th><th>Cable Length (FT)</th></tr><tr><td></td><td></td><td></td><td></td><td></td></tr><tr><td></td><td></td><td></td><td></td><td></td></tr><tr><td></td><td></td><td></td><td></td><td></td></tr></table>		Model	Sensitivity (mV/g)	Range (Gpeak)	Oper. Temp(°F)	Cable Length (FT)															
Model	Sensitivity (mV/g)	Range (Gpeak)	Oper. Temp(°F)	Cable Length (FT)																							
Refer to the performance specifications of the products in this family for detailed description.																											
Supplied Accessories:																											
1) Accredited Calibration Certificate (ISO 17025)																											
Notes:																											
[1] Measured at 100 Hz, 1 G rms per ISA RP 37.2.																											
[2] Measured using zero-based best straight-line method, % of F.S. or any lesser range.																											
[3] Do not apply power to this device without current limiting, 20 mA, MAX. To do so will destroy the integral IC amplifier.																											
[4] In the interest of constant product improvement, we reserve the right to change specifications without notice. It is the customer's responsibility to validate that a particular product with the properties described in the product specification is suitable for use in a particular application. Parameters provided in datasheets and / or specifications may vary in different applications and performance may vary overtime. All operating parameters, including typical parameters, must be validated for each customer application by the customer's technical experts.																											
PHYSICAL																											
Weight, Max Housing	Material	ENGLISH		SI																							
	Isolation	0.6 oz		16 grams																							
Connector Mounting	Stud Mount	Titanium		Titanium																							
		Base Isolated		Base Isolated																							
		10-32		10-32																							
		1/4-28		1/4-28																							
PERFORMANCE																											
Sensitivity +/- 5% [1]		10 mV/g		1.02 mV/ m/s ²																							
Range F.S. For ± 5 Volts Output		500 g pk		4900 m/s ² pk																							
Frequency Range, ± 15%		1 to 10000 Hz		1 to 10000 Hz																							
Resonant Frequency		> 25 kHz		> 25 kHz																							
Mechanical Filter Resonance		> 13 kHz		> 13 kHz																							
Linearity [2]		± 1 %F.S		± 1 %F.S																							
Transverse Sensitivity, Max.		5%		5%																							
Broad Band Resolution		0.007 g/sqr(Hz)		0.06867 m/s ² /sqr(Hz)																							
ENVIRONMENTAL																											
Maximum Vibration		500 ±gpk		4905 ± m/s ² pk																							
Maximum Shock		5000 ±gpk		49050 ± m/s ² pk																							
Temperature Range (Operational)		-60 to 250 °F		-51 to 121 °C																							
Seal		Hermetic		Hermetic																							
Base Strain Sensitivity		0.04 g/με		m/s ² / με																							
Magnetic sensitivity, Typ		0.00007 g/Gauss		0.00068 m/s ² /Gauss																							
ELECTRICAL																											
Supply Current [3]		2 to 10 mA		2 to 10 mA																							
Compliance Voltage Range		18 to 30 VDC		18 to 30 VDC																							
Output Impedance, Typ		100 Ω		100 Ω																							
Bias Voltage	Room Temp	7.5 to 13.0 VDC		7.5 to 13.0 VDC																							
Discharge Time Constant		0.5 to 2.0 sec		0.5 to 2.0 sec																							
Warm - up Time		1 sec		1 sec																							
Overload Recovery		<10 μsec		<10 μsec																							
Sensitivity Change Vs.Current		<1 %		<1 %																							
Electrical Isolation, Min		10 GΩ		10 GΩ																							
Electrical Filter Corner Frequency (2 pole)		10 kHz		10 kHz																							



21592 Marilla Street, Chatsworth, California 91311 Phone: 818.700.7818 Fax:818.700.7880 www.dytran.com For permission to reprint this content, please contact info@dytran.com