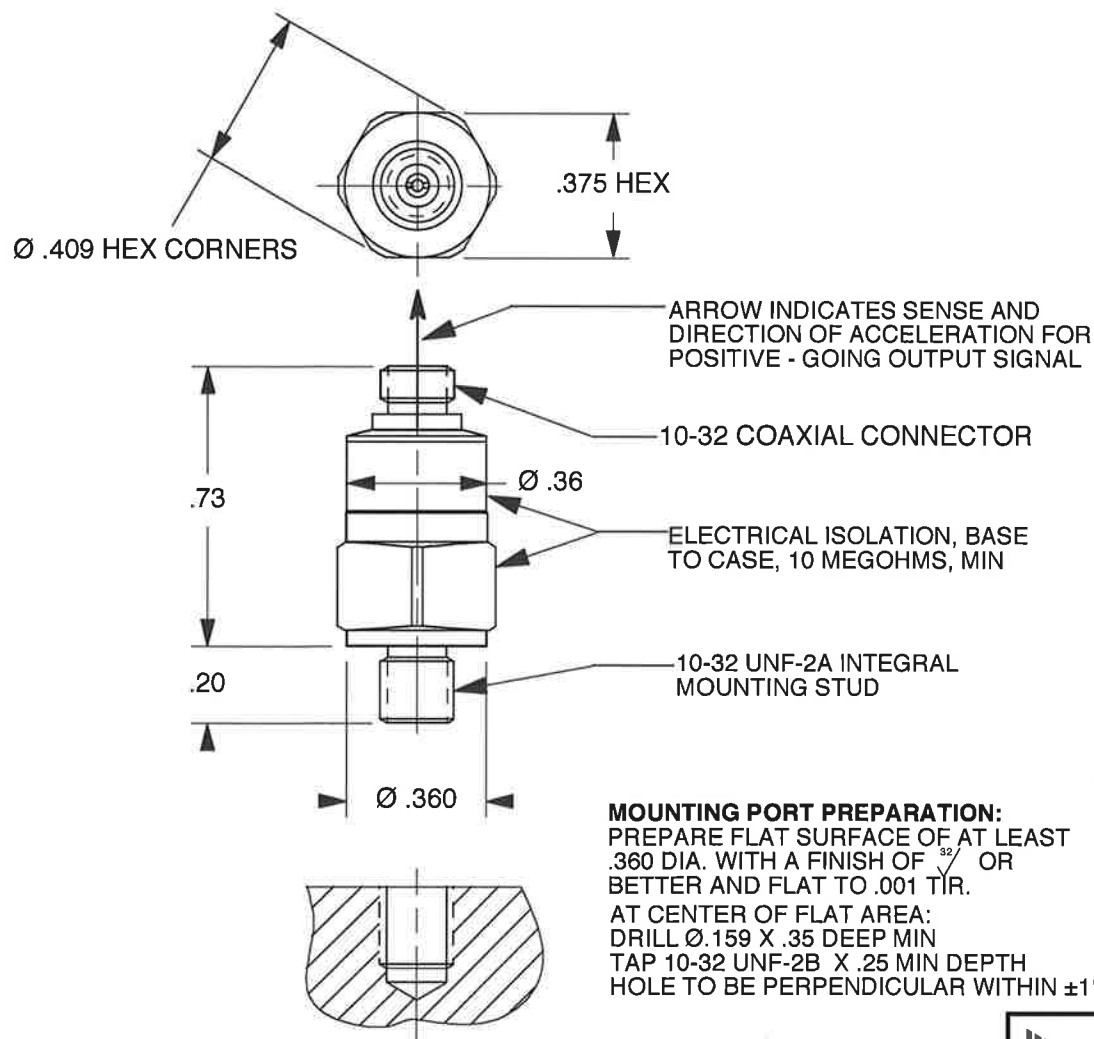


DYTRAN PROPRIETARY AND CONFIDENTIAL
 THE INFORMATION CONTAINED IN THIS DRAWING IS THE SOLE PROPERTY OF
 DYTRAN INSTRUMENTS, INC. AND ANY REPRODUCTION IN PART OR AS A
 WHOLE OR ANY OTHER DISSEMINATION OF THIS INFORMATION WITHOUT THE
 WRITTEN PERMISSION OF DYTRAN INSTRUMENTS, INC. IS PROHIBITED.

REV	ECN	DESCRIPTION	BY/DATE	CHK	APPR
A	10476	REMOVED TIG WELD GROOVES	NC/11-7-13	EM	<i>Dr</i>



3. MATERIAL: 300 SERIES STAINLESS STEEL.

2. WEIGHT: 8 GRAMS.

1. RECOMMENDED MOUNTING TORQUE ON 3/8 IN. HEX: 20 TO 25 LB.-INCHES.

EXCEPT AS OTHERWISE NOTED

ALL DIMENSIONS IN INCHES
TOLERANCE: .XXX = ± .XX = ±

SURFACE FINISH
EXCEPT AS NOTED ✓

BREAK EDGES TO DEBURR
RADIUS OR CHAMFER

THESE DIAS TO T.I.R.


FILLETS - MAX RAD.



**MASTER
ONLY IF IN RED**

CHATSWORTH, CA.

SCALE 2X	DESIGN N.C.	DATE 1/24/02				
DRAWN N.C.	DATE 1/24/02	PART NO. MODEL 3019A1				
CHECKED R.A.	DATE 1/24/02	MAT'L			REV A	
APPROVED <i>Dr</i>	DATE 1/24/02	NEXT ASSEMBLY	USED ON 3019A1			
TITLE OUTLINE/INSTALLATION DRAWING, HIGH FREQUENCY ACCELEROMETER MODEL 3019A1			DWG NO. 127-3019A1			
			SHEET 1 OF 1			

Model Number 3019A1		PERFORMANCE SPECIFICATION				DOC NO PS3019A1	
		MINIATURE IEPE ACCELEROMETER				REV A, ECN 10588, 12/04/13	
		<ul style="list-style-type: none">• MINIATURE SIZE• EXCELLENT LINEARITY• HERMETICALLY SEALED					
		ENGLISH		SI			
		0.3 0.375 x 0.73 10-32 Micro Coax 10-32 X .20 Long 300 SS Quartz		oz Inches grams mm			
PHYSICAL Weight Size Connector Mounting Provision Material Element Style		Hex x Height Top Mounted Integral Stud Accelerometer and Connector					
PERFORMANCE Sensitivity, ±5% [1] Range F.S for ± 5 Volts Output Frequency Response, ±5% Frequency Response, ±3db Resonant Frequency Equivalent Electrical Noise Floor Linearity [2] Maximum Transverse Sensitivity Strain Sensitivity @ 250µe		10 ±500 1 to 10000 .3 to 15000 >50 0.007 ± 2% 5 0.003		mV/g g Hz Hz kHz grms % F.S. g/µe		1 ±4905 1 to 10000 .3 to 15000 >50 0.0687 ± 2% 5 0.03	
						mV/m/s ² m/s ² Hz Hz kHz m/s ² rms % F.S. % m/s ² /µe	
ENVIRONMENTAL Maximum Vibration Maximum Shock Temperature Range Seal, Hermetic		±1000 ±3000 -60 to +300 Welded/Glass To Metal		gpeak gpeak °F		±9810 ±29430 -51 to +149 Welded/Glass To Metal	
						m/s ² peak m/s ² peak °C	
ELECTRICAL Supply Current Range [3] Compliance Voltage Range Output Impedance, Typ Bias Voltage Discharge Time Constant Electrical Isolation, Min. Output Signal Polarity for Acceleration Toward Top		2 to 20 + 18 to +30 100 +7.5 to +9.5 0.5 to 1.0 10 Positive		mA Volts Ω VDC Sec MQ		2 to 20 + 18 to +30 100 +7.5 to +9.5 0.5 to 1.0 10 Positive	
						mA Volts Ω VDC Sec MQ	

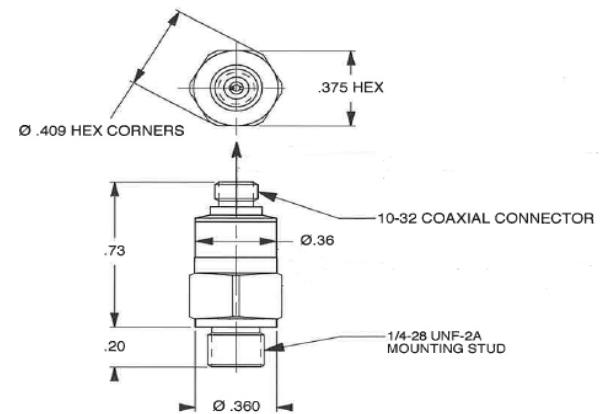
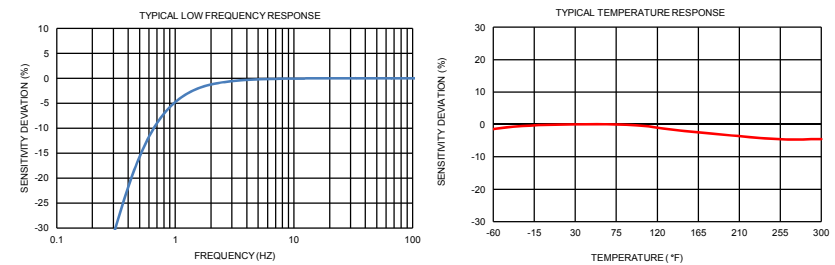
Please refer to the performance specifications of the products in this family for detailed description

Supplied Accessories:

- 1) Accredited calibration certificate (ISO 17025)

Notes:

- [1] Measure at 100Hz, 1 grms per ISA RP 37.2
- [2] Measure using zero-based straight line method, % of F.S. or any lesser range.
- [3] Do not apply power to this system without current limiting, 20 mA MAX. To do so will destroy the IC charge amplifier.



Units on the line drawing are in inches, units in brackets are in millimeters. Refer to 127-3019A1 for more information.